



# Promise

「Epic Seven」OST

Original Performer: Raon Lee

Composer: Epic Seven

Arranged By: YXY Piano Covers / Nayu

♩ = 163

*f*

Piano score for measures 1-5. The piece is in 4/4 time with a tempo of 163 BPM. It begins with a forte (f) dynamic. The right hand features a melodic line with eighth and sixteenth notes, while the left hand provides a steady eighth-note accompaniment.

6

*mf*

Piano score for measures 6-10. The dynamics shift to mezzo-forte (mf). The melodic line in the right hand continues with grace notes and eighth notes, and the left hand maintains its accompaniment pattern.

11

Piano score for measures 11-16. The right hand introduces a new melodic phrase with a key signature change to one flat (B-flat major/D minor). The left hand continues with eighth-note accompaniment.

17

5

Piano score for measures 17-21. The right hand features a series of chords and a melodic line. The left hand includes a five-measure rest (marked with a '5' and a bracket) before continuing with eighth-note accompaniment.

23

*f*

27

31

35

40

This piano score consists of five systems, each with a grand staff (treble and bass clefs). The music is written in a key with one flat (B-flat) and a 4/4 time signature. Measure 23 begins with a forte (*f*) dynamic. The right hand features complex chords and melodic lines, while the left hand plays a steady eighth-note accompaniment. Measures 27, 31, 35, and 40 are marked at the start of their respective systems. The score concludes with a final chord in measure 40.

45

50

55

59

65

71

77

81

85

89

94

99

104

109

114

119

Measures 119-123: The right hand features a melodic line with eighth and sixteenth notes, while the left hand provides a steady eighth-note accompaniment. The key signature has two flats.

124

Measures 124-128: The right hand continues with chords and moving lines. The left hand has a more complex pattern with some triplets. A *mp* (mezzo-piano) dynamic marking appears in measure 126.

129

Measures 129-132: The right hand has a melodic line with some rests. The left hand features a series of chords. A *ff* (fortissimo) dynamic marking is present in measure 131. A *cresc.* (crescendo) marking with a dashed line spans from measure 129 to 132.

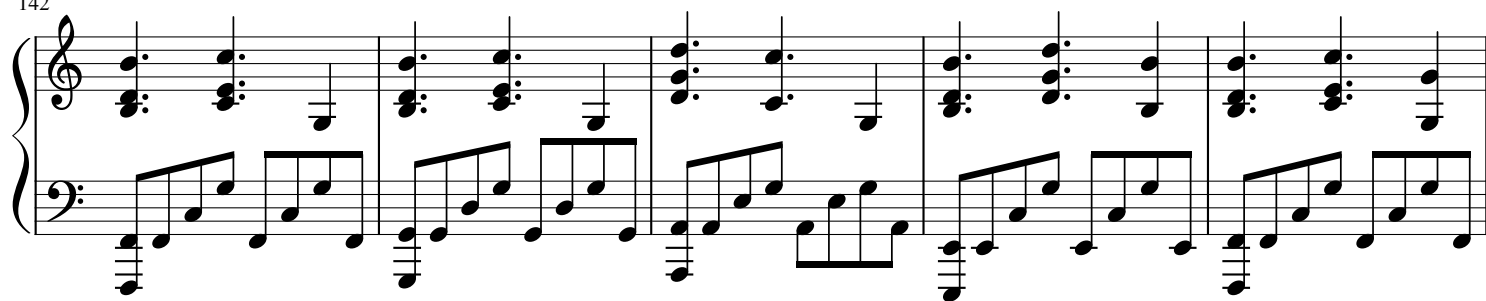
133

Measures 133-137: The right hand includes a glissando (marked 'gliss.') in measure 133. The left hand has a rhythmic pattern of eighth notes. A *f* (forte) dynamic marking is present in measure 134.

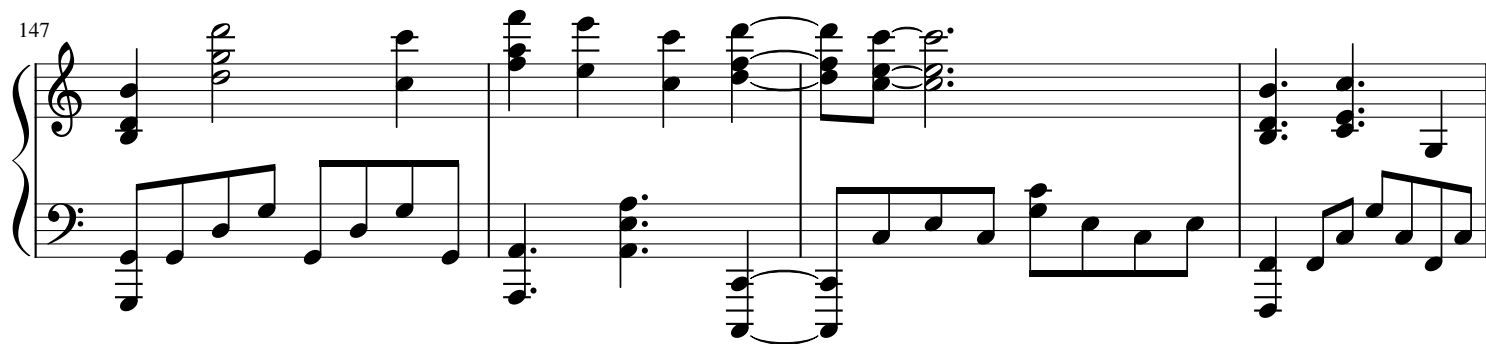
138

Measures 138-142: The right hand features sustained chords. The left hand has a melodic line with some accidentals (flats). The key signature changes to one flat in measure 141.

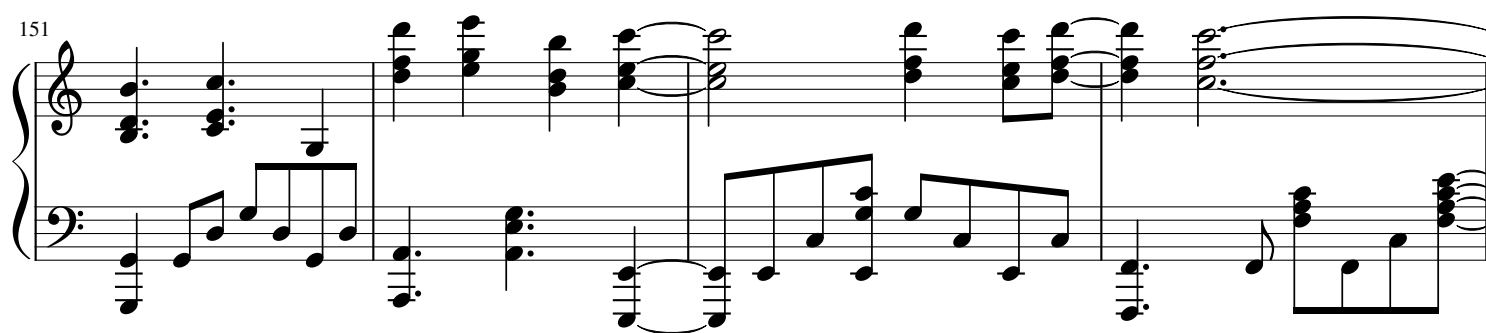
142



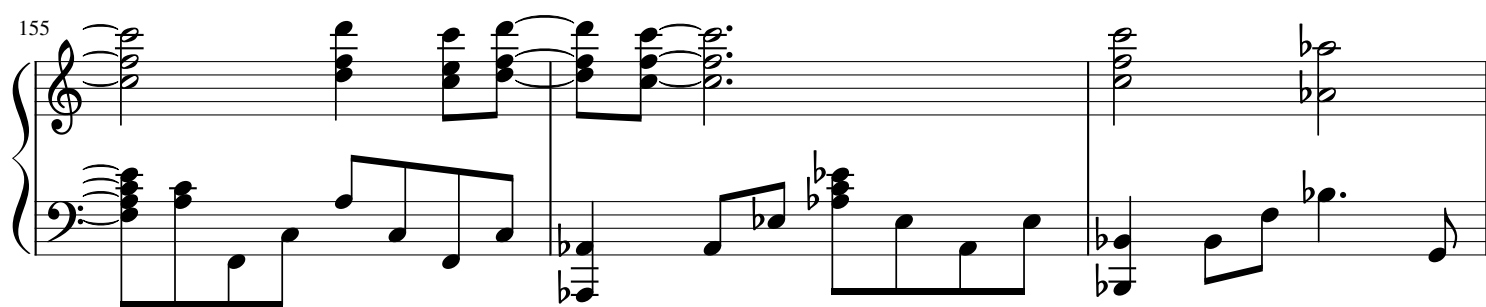
147



151



155



158

